



**Description**

A compact, economical, 6 or 7 figure, non-reset, electromechanical counter designed for general purpose industrial and commercial counting applications. It is designed for a variety of mounting methods as required by the application. Commonly used for coin-operating equipment, photocopiers and vending machines.

**Features**

- 6 or 7 figure
- Compact
- Non-reset
- Variety of mounting options

**Options**

- Voltages
- Lead lengths
- 5 figure

**Specifications**

**Figures:** 6 or 7 figures, white on black, 0.17" [4.3mm] high  
**Reset:** None  
**Speed:** 1,000 counts/minute AC, (min. 30ms - on, 30ms - off)  
 1,200 counts/minute DC, (min. 25ms - on, 25ms - off)  
**Power:** AC: 24VAC ~ 4 watts  
 115VAC ~ 3.5 watts  
 230VAC ~ 5 watts  
 DC: 12/24VDC ~ 2 watts

**Mounting:** Panel or base  
**Terminations:** (2) #22 AWG 105°C wire leads, 12" [305mm] long  
**Operating Life:** Beyond 10 million counts  
**Temp. Range:** -15°F to +140°F [-26°C to +60°C]  
**Approvals:** UL Recognized, CE Compliant, ROHS  
**Weight:** 3.5 oz. [99g]

| Models         | Description                      | Models  | Description                      |
|----------------|----------------------------------|---------|----------------------------------|
| <b>P2-4816</b> | 115VAC, 6 figures, P panel mount | D8-4817 | 24VDC, 7 figures, D base mount   |
| P8-4816        | 24VDC, 6 figures, P panel mount  | P2-4817 | 115VAC, 7 figures, P panel mount |
| <b>V2-4816</b> | 115VAC, 6 figures, V base mount  | P8-4817 | 24VDC, 7 figures, P panel mount  |
| V3-4816        | 24VAC, 6 figures, V base mount   | V2-4817 | 115VAC, 7 figures, V base mount  |
| V8-4816        | 24VDC, 6 figures, V base mount   | V8-4817 | 24VDC, 7 figures, V base mount   |
| V9-4816        | 12VDC, 6 figures, V base mount   |         |                                  |

\* Items in bold are normally in factory stock.

**Applications**

Control panels



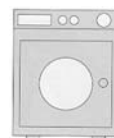
Gaming machines



Vending machines



Coin-operated equipment



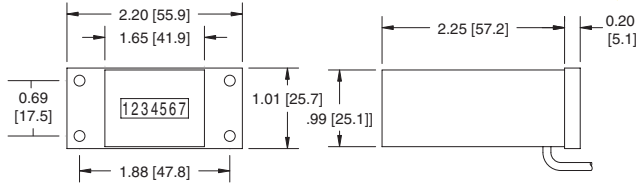
Photocopiers





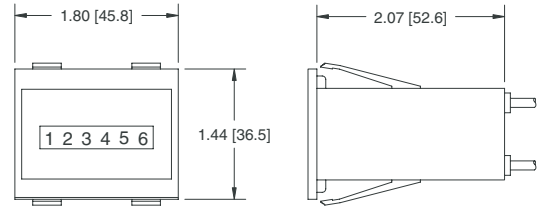
Dimensions

D - Mount



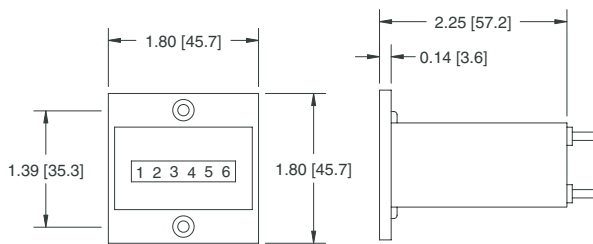
Mounting holes: 0.15" [3.8] Dia.

SR - Mount



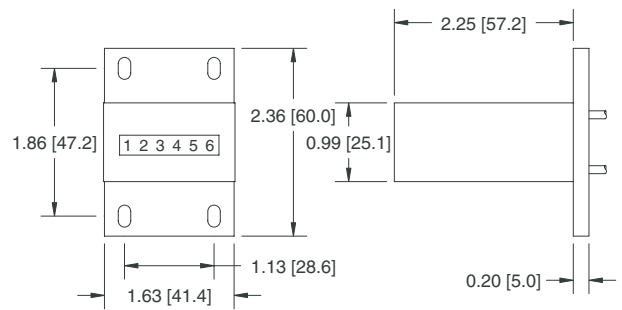
Panel cutout: 1.67" x 1.29" [42.4 x 32.8mm]  
Recommended panel thickness: 0.04" to 0.08" [1.0 to 2.0mm]

P - Mount



Mounting holes: For #5 flat head screw  
Panel cutout: 1.72" x 1.05" [43.7 x 26.7mm]

V - Mount



Mounting holes: 0.16" x 0.28" [4.1 x 7.1mm] slots