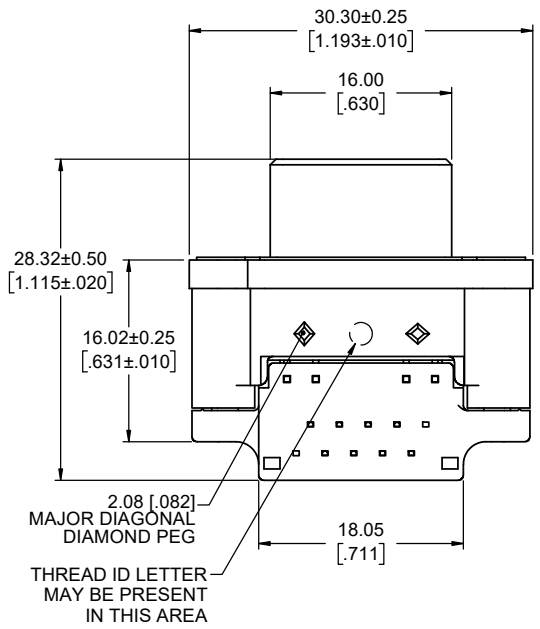
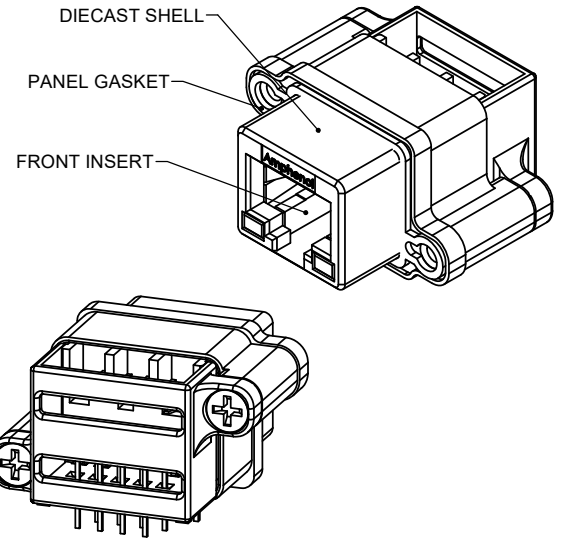
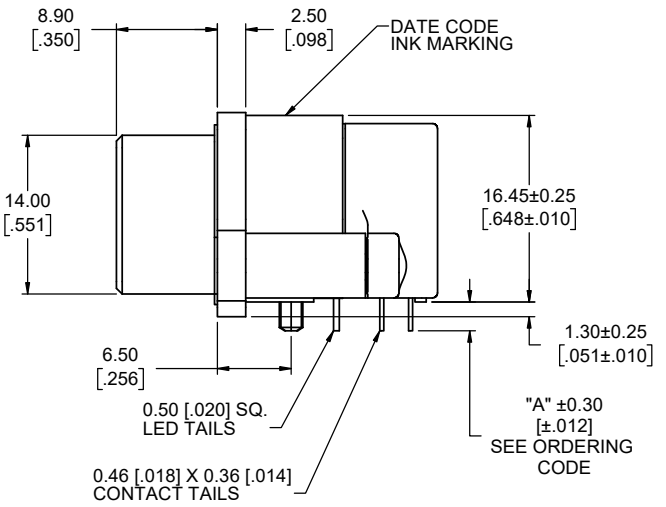
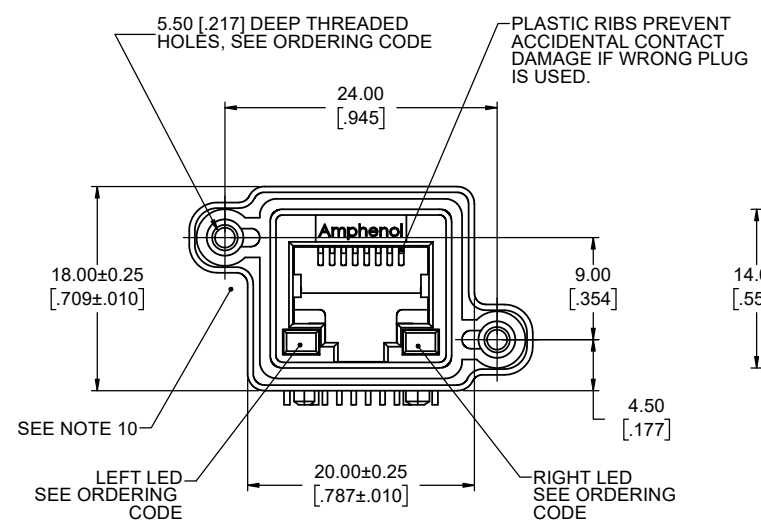


REVISIONS			
REV	DESCRIPTION, ECN, EAR NO.	DATE	APP'D
C	PRODUCT DRAWING (EAR 14655)	NOV21/18	K.L.
D	PRODUCT DRAWING (EAR 14764)	SEP06/19	K.L.



**ORDERING CODE: MRJR-938X-XC**

SERIES, RUGGED RJ  
 CAT6A RJ45 RECEPTACLE, RIGHT ANGLE PCB TAIL, 8 CONTACTS  
 LED OPTION:  
 0 = NONE  
 1 = GREEN LEFT, YELLOW RIGHT  
 4 = YELLOW LEFT, GREEN RIGHT  
 5 = GREEN LEFT, GREEN RIGHT  
 7 = RED LEFT, GREEN RIGHT  
 A = BI-COLOUR GREEN/YELLOW LEFT  
 BI-COLOUR GREEN/YELLOW RIGHT  
 D = GREEN LEFT  
 BI-COLOUR GREEN/YELLOW RIGHT  
 E = YELLOW LEFT  
 BI-COLOUR GREEN/YELLOW RIGHT  
 TAIL LENGTH AND MOUNTING HOLE THREAD OPTION:  
 0 = "A" 2.54 [0.100], #4-40 UNC  
 B = "A" 3.81 [0.150], #4-40 UNC  
 M = "A" 2.54 [0.100], M3 X 0.5  
 P = "A" 3.81 [0.150], M3 X 0.5  
 SINGLE PORT, EXTRA CLEARANCE NEAR SHELL MOUNTING HOLES

**NOTES:**

- MATERIALS: ALL MATERIALS ARE RoHS COMPLIANT PER EU DIRECTIVE 2011/65/EU AND AMENDMENTS
  - SHELL - DIECAST ZINC, NICKEL PLATED
  - CONTACTS - PHOSPHOR BRONZE WITH 1.27µm [50 µm] MIN GOLD OVER 1.27µm [50 µm] MIN NICKEL ON THE MATING AREA AND MATTE TIN OVER NICKEL ON THE CONTACT TAILS.
  - INSERTS - ENGINEERING THERMOPLASTIC, UL94V-0 FLAMMABILITY RATING, REAR INSERTS: BLACK NYLON, FRONT INSERT: CLEAR POLYCARBONATE
  - GASKET - SILICONE RUBBER, CONDUCTIVE, BLACK
  - LED'S - EPOXY LENS, STEEL TAILS WITH TIN PLATING
  - PCB - FR-4 FIBERGLASS, LEAD FREE, UL94V-0 FLAMMABILITY RATING
- ENVIRONMENTAL PERFORMANCE PER IEC 60529 CODE IP67 FOR SEAL BETWEEN MATING AREA AND PCB SIDE OF CONNECTOR. GASKET PROVIDES SEAL TO INSIDE FACE OF PANEL.
- CURRENT RATING: 1.25 AMPERES
- CONTACT RESISTANCE: 30 MILLIOHMS MAXIMUM
- OPERATING TEMPERATURE: -40C TO +105C
- LED CHARACTERISTICS: FORWARD DC CURRENT 25 mA MAX. FORWARD VOLTAGE 2.5V MAX. @ 2 mA
- RECOMMENDED TORQUE FOR PANEL MOUNT SCREWS: 0.45 TO 0.65 N-m (4.0 TO 5.75 IN-LBS) FOR STEEL SCREWS WITH 3.00 (.118) THREAD ENGAGEMENT.
- CUSTOMER TO VERIFY THAT ALL PROCESS CLEANERS ARE COMPATIBLE WITH POLYCARBONATE MATERIAL.
- AVAILABLE MATING AREA COVERS PROVIDE ADDED PROTECTION. CONSULT WITH AMPHENOL CANADA FOR MORE DETAILS.
- COMPARED TO DRAWING P-MRJR-53XX-X1, PARTS ON THIS DRAWING HAVE EXTRA CLEARANCE NEAR THE SHELL MOUNTING HOLES (2 PLCS).

**SPECIAL CONNECTORS**  
 MANY UNIQUE FEATURES ARE READILY AVAILABLE TO SUIT CUSTOMER REQUIREMENTS. CONSULT WITH AMPHENOL CANADA FOR DETAILS.



UNLESS SPECIFIED OTHERWISE	DRAWN	M. PAHULJE	MAR27/18
PRIMARY UNITS MILLIMETERS	CHECKED	K. LAMBIE	MAY24/18
SECONDARY INCHES	M.E. APP'D		
REFERENCE IN PARENTHESES	Q.A. APP'D		
GENERAL TOLERANCES	DWG APPR.		
1 DECIMAL PLACE	ENG. REL. NO.	EAR 14655	
2 DECIMAL PLACES ±0.15	REF.		
3 DECIMAL PLACES	THIRD ANGLE PROJECTION		
ANGULAR DEGREES	DO NOT SCALE DRAWING		

**Amphenol Canada Corp.**  
 Commercial Products

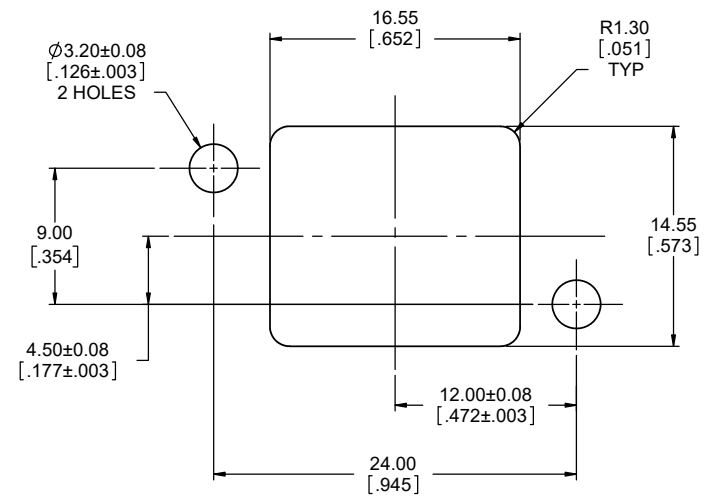
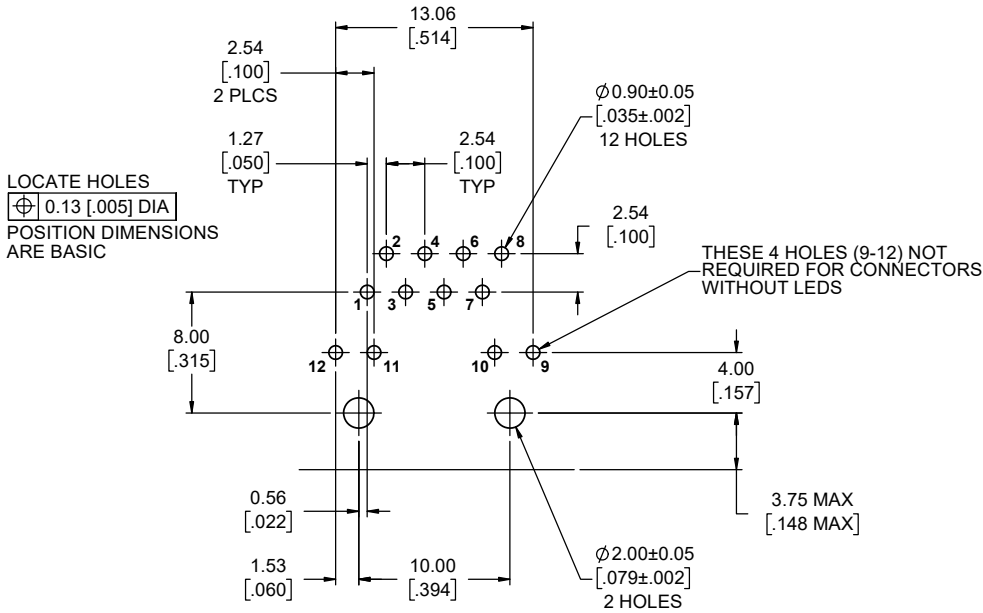
MRJR SERIES RUGGED CAT6A MODULAR JACK, RIGHT ANGLE, 8 CONTACTS, LED, TAIL LENGTH, & THREAD OPTIONS, EXTRA SHELL CLEARANCE, ROHS COMPLIANT

DWG. NO. **P-MRJR-938X-XC** REV **D**

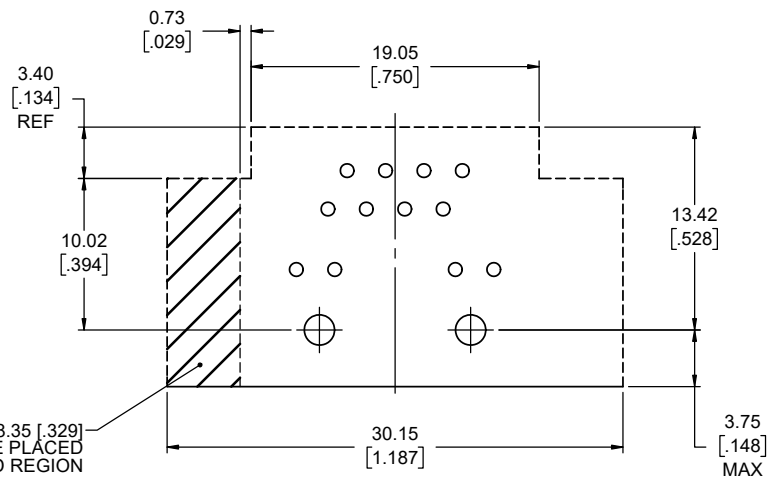
CODE ID NO. 03554 DWG SIZE: X SCALE: 3:1 SHEET 1 OF 2

REVISIONS			
REV	DESCRIPTION, ECN, EAR NO.	DATE	APP'D
C	PRODUCT DRAWING (EAR 14655)	NOV21/18	K.L.
D	PRODUCT DRAWING (EAR 14764)	SEP06/19	K.L.

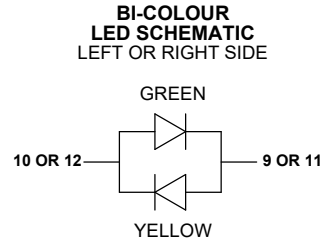
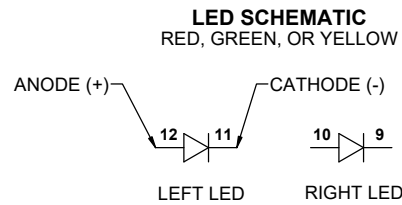
**RECOMMENDED PCB LAYOUT**  
COMPONENT SIDE OF BOARD



**RECOMMENDED PANEL CUTOUT**  
OUTSIDE PANEL VIEW



**RECOMMENDED KEEP-OUT ZONE**  
COMPONENT SIDE OF BOARD



UNLESS SPECIFIED OTHERWISE	DRAWN	M. PAHULJE	MAR27/18
PRIMARY UNITS MILLIMETERS	CHECKED	K. LAMBIE	MAY24/18
SECONDARY INCHES	M.E. APP'D		
REFERENCE IN PARENTHESES	Q.A. APP'D		
GENERAL TOLERANCES	DWG APPR.		
1 DECIMAL PLACE	ENG. REL. NO.	EAR 14655	
2 DECIMAL PLACES ±0.15	REF.		
3 DECIMAL PLACES	THIRD ANGLE PROJECTION		
ANGULAR DEGREES	DO NOT SCALE DRAWING		

**Amphenol Canada Corp.**  
Commercial Products

MRJR SERIES RUGGED CAT6A MODULAR JACK, RIGHT ANGLE, 8 CONTACTS, LED, TAIL LENGTH, & THREAD OPTIONS, EXTRA SHELL CLEARANCE, ROHS COMPLIANT

DWG. NO. **P-MRJR-938X-XC** REV **D**

CODE ID NO. 03554 DWG SIZE: X SCALE: 5:1 SHEET 2 OF 2